



PHOTOS BY DAVID BACON

FIGHTING FOR JUSTICE, CHANGING LIVES.

OUR MISSION

To fight for justice and individual rights alongside the most exploited communities of our society.

WHO WE SERVE

CRLA serves low-income individuals living in rural and other communities throughout all of California. CRLA clients include farmworkers, individuals with disabilities, immigrant populations, school children, Lesbian/Gay/Bisexual and Transgender (LGBT) populations, seniors and individuals with limited English proficiency.

OUR WORK

CRLA has been providing free legal services since 1966. The free legal services include litigation, outreach and legal education in the following areas: housing, labor and employment, education, rural health, and leadership development.

In addition to traditional legal representation, CRLA has created a series of special programs and initiatives designed to address widespread issues facing our diverse client community.

CRLA's special programs include: Community Equity Initiative, Indigenous Program, LGBT Program, Lending Discrimination Project, Rural Education Equity Program, and Rural Health Disparities Program.

CRLA's special initiatives focus on providing education and training to prevent sexual harassment in the workplace, alleviating heat stress in the fields, and supporting survivors of sexual assault.

- In 2014, CRLA served 43,723 individuals
- CRLA helps nearly 8,000 children annually
- In 2014, CRLA recovered or saved \$1.86 million dollars for our low-income clients



ACCOMPLISHMENTS

CRLA has utilized litigation and strategic programming to help thousands of individuals, families, and communities seek justice. Here are just some of the highlights from our 49 years of advocacy:

- 2013** – An appellate court rules that counties administering the IHSS program can be liable as employers for claims for unpaid wages, affecting the rights of over 365,000 home health care workers statewide.
- 2009** – Growers are now accountable for wage and employment discrepancies if their independent contractors try to cheat farmworkers.
- 2008** – Promoting healthier rural communities through an appellate court victory, which mandated that the State of California adopt a more protective regulation on pesticide exposure.
- 2000** – Securing a \$21 million settlement on behalf of low-income, Latino farmworker families in Riverside County, displaced by mobile home park closures.
- 1990** – Restoring \$20 million in cuts to funding for family planning and health care services for poor women.
- 1986** – Drafting the Special Agricultural Worker provision of the new Immigration Act, which legalized one million undocumented workers nationwide.
- 1973** – Ending discriminatory placement of non-English speaking students in special education.

SUPPORT CRLA

Join us in the fight for justice

- **Tell** your friends and family about CRLA
- **Sign-up** for our Rural Justice Updates
- **Donate** online at www.crla.org

501(c)(3) STATEMENT

Your contributions help CRLA provide outreach, community education and no-cost legal services to poor Californians and their families. CRLA is a 501(c)(3) non-profit organization. Your contribution is tax deductible to the fullest extent allowed by law. Please consult your tax preparer for details. CRLA's tax identification number is: 95-2428657.

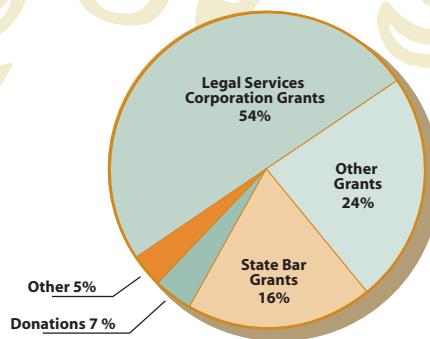
Get involved

- **Host** a CRLA house party or office luncheon
- **Sponsor** a local CRLA fundraising event
- **Volunteer** at one of our local offices
- **Provide** pro bono counsel
- **Underwrite** a CRLA fellowship
- **Contact** our Development Department to learn more: development@crla.org

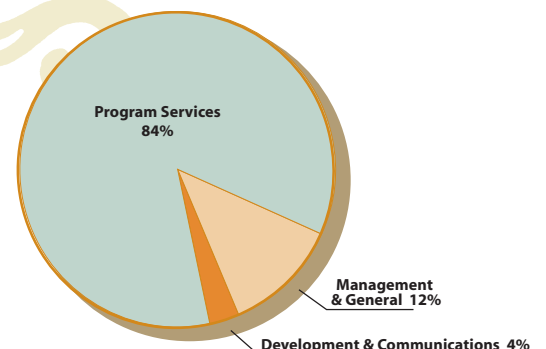
CRLA INFO



REVENUE



EXPENSES



FOR LOCAL OFFICE CONTACT INFORMATION PLEASE VISIT WWW.CRLA.ORG